



For Life
Produktions- und Vertriebsgesellschaft
für Heil- und Hilfsmittel mbH

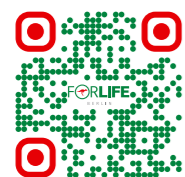
Am Studio 16
12489 Berlin
Germany

mail@forlife.info
www.forlife.info

S STOMOCUR®

**Changing a Two-Piece
Ostomy Supply – As Shown
on a Urostomy**

www.forlife.info





Helpful Tips for Your Daily Ostomy Care

Dear patient,

you have recently had an ostomy surgery and are now temporarily or permanently living with a stoma. In order for you to regain your independence as quickly as possible, you will need to learn how to take care of your new ostomy and how to change your own appliance. This brochure will teach you how to change your pouch in 7 easy steps using a urostomy (an artificial opening for the urinary system) as an example.

Take your time and do not be discouraged by minor setbacks, especially if everything doesn't go right the first time. As with everything in life, practice makes perfect.

FORLIFE



1 Make sure that you have all the materials you will need ready.



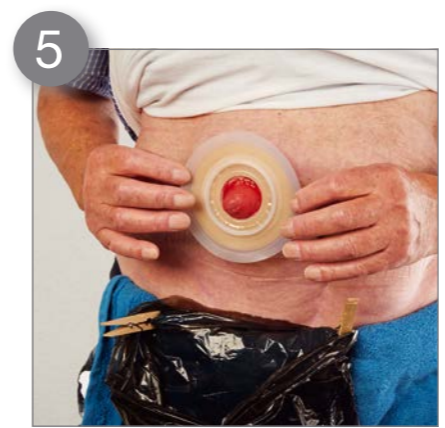
2 Clean the skin surrounding the stoma from the outside to the inside. In the case of a urostomy, clean from the inside outwards.



3 Cut the skin protection of your pouch to the size of your stoma.



4 Now remove the protective film from the skin protection of your baseplate.



5 Attach the baseplate exactly over the stoma. Make sure that it fits well and is fully attached.



6 Fasten the pouch to the baseplate.



7 Make sure that there is a secure connection between the baseplate and the pouch.

Helpful STOMOCUR® Accessories for Your Ostomy Care

STOMOCUR® **Skin Protection Paste** for external use on the skin around the stoma.



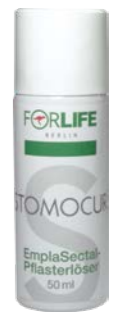
STOMOCUR® **Skin Protection Powder**
This powder absorbs moisture from the skin around the stoma, ensuring better adhesion of your baseplate.



STOMOCUR® **Safety Lotion**
prevents skin irritation and enables a more gentle removal of the skin protection plate.



STOMOCUR® **EmplaSectal**
This spray helps with the easy and skin-friendly removal of your baseplate.



STOMOCUR® **Scissors**
Practical and ergonomically shaped scissors that are used to cut out the baseplate openings.

